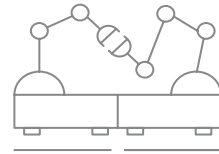


CoBo-Stack 10i



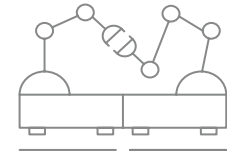
ROBOT

Technical specifications



ROBOT

CoBo-Stack 10i

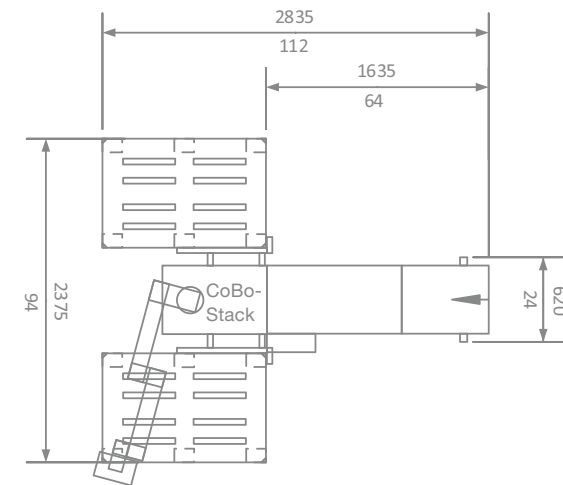


| TECHNICAL SPECIFICATIONS | | CoBo-Stack 10i |
|-------------------------------------|------|---|
| Infeed height | | – Standard height: 793 mm – 923 mm (31 1/4" – 36 1/4"), adjustable in 10 mm (3/8") steps – Optional special height, suitable for example for Horizon PSX-56: 734 mm – 864 mm (28 3/4" – 34"), adjustable in 10 mm (3/8") steps, the maximum pallet height is reduced by 60 mm (2 3/8") |
| Gripper XS – product format (W x L) | min. | 95 mm x 148 mm (3 3/4" x 5 7/8") |
| | max. | 160 mm x 280 mm (6 1/4" x 11") |
| Gripper S – product format (W x L) | min. | 95 mm x 210 mm (3 3/4" x 8 1/4") |
| | max. | 160 mm x 365 mm (6 1/4" x 14 1/4") |
| Gripper M – product format (W x L) | min. | 155 mm x 210 mm (6 1/8" x 8 1/4") |
| | max. | 235 mm x 365 mm (9 1/4" x 14 1/4") |
| Gripper L – product format (W x L) | min. | 180 mm x 210 mm (7" x 8 1/4") |
| | max. | 260 mm x 365 mm (10 1/4" x 14 1/4") |
| Stack height | min. | 60 mm (2 3/8") |
| | max. | 150 mm (6") (with gripper XS, the max. stack height is limited to 125 mm (4 7/8")) |
| Stack weight | max. | 6 kg (13 lb) |
| Stacks per hour | max. | 300 (at up to 6 kg (13 lb) stack weight) |
| Pallet height | max. | 900 mm (35 1/2"); optional 1,400 mm (55") |
| Pallet format | min. | 300 mm x 300 mm (11 3/4" x 11 3/4") |
| | max. | EPAL 800 mm x 1,200 mm (31 1/2" x 47 1/4") |

| | XS | S | M | L | XL | M-H Book block | Flex | Landscape M | Vacuum |
|----------------|------------|------------|------------|------------|------------|----------------|------------|-------------|------------|
| Product length | 148-320 mm | 210-370 mm | 210-370 mm | 210-370 mm | 210-370 mm | 210-370 mm | 210-370 mm | 155-230 mm | 210-370 mm |
| Product width | 95-160 mm | 95-160 mm | 155-235 mm | 180-260 mm | 205-285 mm | 145-225 mm | 185-263 mm | 285-360 mm | 150-360 mm |
| Pile height | 60-125 mm | 60-150 mm | 60-150 mm | 60-150 mm | 60-150 mm | 60-205 mm | 60-150 mm | 60-150 mm | 20-150 mm |

TECHNICAL DRAWING Floorplan CoBo-Stack

Measurements: $\frac{\text{mm}}{\text{inch}}$



MBO Postpress Solutions GmbH
Grabenstrasse 4–6 / 71570 Oppenweiler / Germany
Phone +49 (0) 7191 46-0 / www.mbo-pps.com

Your contact partner

INFO@MBO-PPS.COM

This brochure is subject to change without notice. The technical specifications vary depending upon paper quality.

05/2024_v1



CoBo-Stack 10i ROBOT